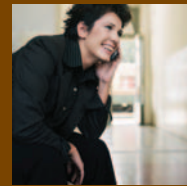
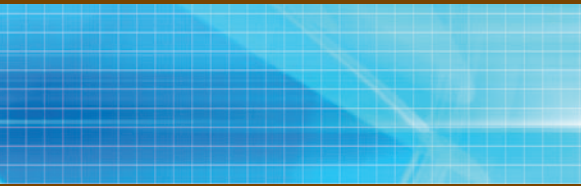


January 7-11, 2006
Las Vegas, USA

IEEE CONSUMER ELECTRONICS SOCIETY

CALL FOR PAPERS



**CO-LOCATED WITH THE
INTERNATIONAL CONSUMER
ELECTRONICS SHOW**

**INTERNATIONAL CONFERENCE ON
CONSUMER ELECTRONICS 2006**



Conference Chair

Anthony Vetro,
Mitsubishi Electric Research Labs

Technical Program Chair

Peter H. N. de With,
LogicaCMG / TU Eindhoven

Tutorials Chair

Akiomi Kunisa, Sanyo

Special Sessions Chair

Bernard Fong,
Auckland Univ. of Technology

Publicity Chair

Virginia Williams,
Consumer Electronics Association

Steering Committee

Hans Baumgartner, Sarnoff Corp.
Ralph Justus, Consumer
Electronics Association
Stuart Lipoff, IP Action

Chinese Liaison

Ja-ling Wu, National Taiwan
University

European Liaison

Dietmar Hepper, Thomson

Korean Liaison

Sangil Park, Samsung Electronics

Far East Liaison

Kazuo Kuroda, Pioneer Corp.

Conference Coordinator

Charlotte Kobert

**For further information
or questions, please visit
www.icce.org or contact us
at icce@ieee.org**

The International Conference on Consumer Electronics (ICCE) is soliciting technical papers for oral and poster presentation at ICCE 2006. ICCE is an annual event sponsored by the IEEE Consumer Electronics Society, with authors and attendees from around the world. Papers reporting new developments in all areas of consumer electronics are invited, including but not limited to those listed below. Papers of a tutorial nature are particularly encouraged.

HOME ENTERTAINMENT

Home Gateway, DTV, Home Theater, PVR, Interconnects, Game Systems, Interactive and Directed Programming, Internet Integration, Advanced DVD and CD, Displays

MOBILE COMPUTING & COMMUNICATION

Mobile Broadband, Handheld & Wearable Computers, Personal Multimedia Devices, Next Generation Cellular, AV Streaming to Handheld Devices

A/V TECHNOLOGY

Still & Video Cameras, Analog and Digital Audio, 3D Video, Recording, Storage, Compression, Transcoding, Applied Signal Processing, Content Indexing, Networked A/V

RF & WIRELESS

Antennas, Acquisition, Equalization, Spectrum Usage, Software Radio, Wireless LAN, 802.11 Standards, Bluetooth

CONSUMER NETWORKS

Wired & Wireless Multimedia, QoS, Security, Peer-to-Peer, Internet Appliances, Home Control, Bridges, Interoperability, Application Control, Home Architecture

AUTOMOTIVE ENTERTAINMENT & INFORMATION

Navigation, A/V Systems, Driver Assistance, Networks, Communication Aspects, Sensors and Control

SECURITY & RIGHTS MANAGEMENT

Copy and Redistribution Protection, Payments, Trusted Computing, Parental Controls, Legal and Regulatory Issues, Data Collection, Biometrics, Privacy, Encryption

ENABLING TECHNOLOGY

Advanced Semiconductors, Algorithms, O/S, Development Tools, Test Equipment, Advanced Displays, Power and Batteries, Standards, Intellectual Property, Cost Reduction, Compliance Testing, Human-Computer Interface, Special-Needs/Assistive Technology

AUTHOR'S INFORMATION

**Deadline for Paper Submissions
June 27, 2005**

**Notification of Acceptance
September 12, 2005**

**Camera-Ready Paper Due
October 3, 2005**

Authors are invited to submit a 2-page summary according to the posted submission guidelines. Only electronic submissions will be accepted via the web at <http://www.icce.org>.

At least one author of each paper MUST pre-register for the conference by October 3, 2005 for papers to be included in the program.

CALL FOR PAPERS

*Institute of Electrical and Electronics Engineers/
International Conference on Consumer Electronics
Charlotte Kobert
Conference Coordinator
4115 Clendenning Road
Gibsonia, PA 15044*

Return Service Requested

Nonprofit Org.
US Postage
PAID
Gibsonia, PA
Permit No. 12



*International Conference on
Consumer Electronics*

IEEE International Conference on Consumer Electronics - ICCE Technical Program Committee

*Jean Baronas
Sony Electronics
Jean.Baronas@am.sony.com*

*Ed Barrett
Sony Electronics
Ed.Barrett@am.sony.com*

*Atul Batra
Mitsubishi Digital
abatra@mdea.com*

*Hans Baumgartner
Sarnoff Corporation
hbaumgartner@sarnoff.com*

*E. B. (Erwin) Bellers
Consumer Businesses USA
erwin.bellers@philips.com*

*Petronel Bigioi
National University of Ireland, Galway
petronel.bigioi@nuigalway.ie*

*Martin Bolton
STMicroelectronics
martin.bolton@st.com*

*Jill Boyce
Thomson
jill.boyce@thomson.net*

*Vito Brugliera
Consultant
v.brugliera@ieee.org*

*Yung-Chang Chen
National Tsing Hua University
ycchen@ee.nthu.edu.tw*

*Peter Corcoran
National University of Ireland
peter.corcoran@nuigalway.ie*

*Philip Dang
STMicroelectronics, Inc.
philip.dang@st.com*

*Jayant Datta
Discrete Laboratories, Inc.
jayant_datta@hotmail.com*

*Peter H. N. de With
LogicaCMG / TU Eindhoven
peter.de.with@logicacmg.com*

*Richard F. Doherty
Envisioneering
rdoherty@envisioneering.net*

*Lee Estrada
TECO Creative Sensor Inc.
leeestrada@msn.com*

*James O. Farmer
Wave7 Optics, Inc.
j.farmer@ieee.org*

*Bernard Fong
Auckland University of Technology
bfong@ieee.org*

*John G. N. Henderson
Hitachi America, Ltd.
jhenderson@dmsl.hitachi.com*

*Christian Hentschel
University of Technology Cottbus
christian.hentschel@TU-Cottbus.De*

*Dietmar Hepper
Thomson
dietmar.hepper@thomson.net*

*David Hostetler
Premier Wireless
david.hostetler@ieee.org*

*Takuya Ima-ide
Hitachi Ltd.
imaide@msrd.hitachi.co.jp*

*Michael A. Isnardi
Sarnoff Corporation
misnardi@sarnoff.com*

*Egbert G.T. Jaspers
LogicaCMG
egbert.jaspers@logicacmg.com*

*Ralph Justus
Consumer Electronics Association
rjustus@ce.org*

*Brent Karley
Freescale Semiconductor
brent.karley@freescale.com*

*Hari Kalva
Florida Atlantic University
hari@cse.fau.edu*

*Eiji Kasutani
NEC Corporation
e-kasutani@cq.jp.nec.com*

*S. K. (Suki) Kim
Korea University
skkim@mail.korea.ac.kr*

*Sung-Jea Ko
Korea University
sjko@dali.korea.ac.kr*

*Uwe E. Kraus
Bergische Universitat Wuppertal
krausue@uni-wuppertal.de*

*Akiomi Kunisa
Sanyo Electric Co. Ltd.
kunisa@tk.hm.rd.sanyo.co.jp*

*Kazuo Kuroda
Pioneer Corporation
kazuo_kuroda@post.pioneer.co.jp*

*Nam Ling
Santa Clara University
nling@scu.edu*

*Stuart Lipoff
IP Action Partners
slipoff@appliedvalue.com*

*Wang He Lou
Mitsubishi Digital Electronics
America, Inc.
wlou@mdea.com*

*Vishal Markandey
Texas Instruments
v-markandey@ti.com*

*Aldo W. Morales
Penn State University
awm2@psu.edu*

*Marina NICOLAS
STMicroelectronics
marina.nicolas@st.com*

*Kazuhiro Ohara
Texas Instruments
Nishi-Shinjuku Mitsui Bldg.
k-ohara@ti.com*

*Anthony Ojo
Philips Consumer Electronics
anthony.ojo@philips.com*

*Sangil Park
Samsung Electronics
sipark@samsung.co.kr*

*Sharon Peng
Engineer Harman Consumer Group
speng@harman.com*

*James D. Richards III
Aerodyne Corporation
jim.richards@alum.mit.edu*

*William A. Rowe
WARowe Consultancy
warowe@aol.com*

*Masaru Sakurai
Toshiba Corporation
masaru.sakurai@toshiba.co.jp*

*Paul A. Snopko
Techwell, Inc.
paul.snopko@ieee.org*

*Sorin G. Stan
Philips Consumer Electronics
sorin.stan@philips.com*

*Peter Van Beek
Sharp Laboratories of America
pvanbeek@sharplabs.com*

*Anthony Vetro
Mitsubishi Electric Research Labs
avetro@merl.com*

*Guido Volleberg
Video Signal Processing Group
guido.volleberg@philips.com*

*Virginia Williams
Consumer Electronics Association (CEA)
vwilliams@CE.org*

*James Williamson
Sony Electronics, Inc.
James.Williamson@am.sony.co*

*Ja-ling Wu
National Taiwan University
wjl@csie.ntu.edu.tw*

*Tao Wu
Nokia Research Center
tao.wu@nokia.com*

*Chojuro Yamamitsu
Pioneer Corporation
chojuro_yamamitsu@post.pioneer.co.jp*

*Kei Yamashita
Hitachi, Ltd.
yamasita@msrd.hitachi.co.jp*